



McKendree Presents Information Packet



Table of Contents

General Information.....	1
Dining/Catering.....	4
Lighting.....	5
Audio.....	7
Carpentry.....	9
Miscellaneous Equipment.....	10
Lineset Schedule.....	11
Hett Floorplan.....	12
Hett Seating Chart.....	13
Campus Map.....	14
Equipment Photos.....	15





General Information

Physical Address:
400 North Alton Street
Lebanon, IL 62254

Mailing Address:
The Hettenhausen Center for the Arts
c/o McKendree University
701 College Road
Lebanon, IL 62254

Front of House Services

Director
Michelle Magnussen
mlmagnussen@mckendree.edu
TEL: 618-537-6097

Theater Box Office
TEL: 618-537-6863

Assistant Director
Julia Hunt
jnhunt@mckendree.edu
TEL: 618-537-6557

Technical Services

Technical Director
Douglas Magnussen
dsmagnussen@mckendree.edu
TEL: 618-537-6551

Area Hotel

Drury Inn
1118 Central Park Drive
O'Fallon, IL 62269
TEL: 618-624-2211
FAX: 618-624-1229

Please note that if room fees are being covered by the Hett per your contract, you will still be required to present a credit card for incidentals.

Time Zone

Central Standard Time

Handicapped Access

Facilities are handicap accessible. There is a wheelchair seating area, transfer seats with hinged arms, an elevator, and hearing assistance devices. See seating chart on page 11 for accessible seating locations.

Hearing Assist System

Listen LT-800B-082, 6 Receivers

Parking

Trucks, busses, and trailers can be parked in the loading dock. Access the loading dock by backing all the way through Parking Lot B (see campus map, page 12) and continue around the side of the building.

We have a portable ramp to aid in unloading trucks in the dock.
Shore Power is available for use and is located in the loading dock.
Other vehicles, such as cars will most likely park in Parking Lot B.
However, other arrangements can be made for all parking situations.



Emergency Contacts

McKendree University Public Safety
TEL: 618-537-6911

Police/Fire/Ambulance
TEL: 911

St. Elizabeth's Urgent Care
1512 North Green Mount Road
O'Fallon, IL 62269
TEL: 618-624-3750

Lebanon Chiropractic Clinic
110 West St. Louis Street
Lebanon, IL 62254
TEL: 618-537-4407

Dental Clinic
229 West St. Louis Street, Suite #1
Lebanon, IL 62254
TEL: 618-537-2017

Laundry

Laundry facilities are located nearby but not within the building

Ice

Available nearby, not onsite

Dressing Rooms/Green Room

We have 2 dressing rooms. Each dressing room has a private $\frac{3}{4}$ bathroom, rolling wardrobe racks (4 total), and steamers (2 total). We also have a green room. Please see the Hett Floorplan on page 10 for these locations.



Crew

Student workers with professional technical directors

Projection

Epson 12,000 lumen laser light source projector
Fixed position front of house (above lighting booth)
Remote zoom/refocus

Project on white movie screen (24' H x 20' W, located on lineset 6)
or white RP cyclorama (28'6" H x 63' W, located on lineset 26)

Dining/Catering

*On-campus Dining

Refer to the campus map located on page 12

Ames Dining Hall

#16 on campus map

Hours

	Monday – Friday		Saturday & Sunday
Breakfast	7:00 AM – 10:00 AM	Brunch	11:00 AM – 1:00 PM
Lunch	11:00 AM – 1:30 PM	Dinner	5:00 PM – 6:30 PM
Dinner	4:30 PM – 7:00 PM		

1828 Café

#9 on campus map, located on the upper floor of Pearson's Hall

Hours

Monday - Thursday	Friday	Saturday & Sunday
7:30 AM – 10:00 PM	7:30 PM – 5:00 PM	Closed

*On-campus dining is only offered during the school year

Off-campus Dining

The Gasthaus

115 West St. Louis Street
Lebanon, IL 62254
TEL: 618-808-0088
Bar & Grill

The Lantern BLE

222 West St. Louis Street
Lebanon, IL 62254
TEL: 618-808-0004
Breakfast/Lunch

McDonald's

713 South Madison Street
Lebanon, IL 62254
TEL: 618-537-9806
Fast Food

Mexico Tipico

501 South Madison Street
Lebanon, IL 62254 TEL:
618-808-5020
Mexican Food

Beijing Restaurant

321 South Madison Street
Lebanon, IL 62254
TEL: 618-537-9996
Chinese Takeout

Dairy Queen

412 South Madison Street
Lebanon, IL 62254 TEL:
618-537-2032
Fast Food

If the Hett is providing meal(s) per your contract, McKendree Presents events are catered exclusively by Sodexo Food Services at McKendree University. If not already included in your rider, forward menu requests or any special dietary needs to **Michelle Magnussen** (mlmagnussen@mckendree.edu) no later than one month prior to the event.

Lighting



Control Console

ETC ION Console 1024, two 2x20 sub-master wings, one ETC Net3 Dual Network Node (located on 2nd catwalk) with DMX splitters to distribute to catwalks, electrics, and onstage

Dimming System

Strand C21 (232 dimmers)

Additional Power

400 amp stage lighting service

See image on page 13

The Hett does not own CAM lock tails for hookups

Lighting Inventory

Ellipsoidal Fixtures

- 62 x Strand SL Bodies (575W)
- 20 x Strand 19° lens tube
- 21 x Strand 26° lens tube
- 25 x Strand 36° lens tube
- 7 x ETC Source Four Jr. 36°
- 33 x ETC Source Four Bodies (575W)
- 7 x ETC Source Four 19° lens tube
- 6 x ETC Source Four 26° lens tube
- 26 x ETC Source Four 36° lens tube
- 3 x ETC Source Four 50° lens tube

Pars

- 16 x Martin Rush Par 2 Zoom
- 20 x ETC Source Four Par (with lens kits)
- 30 x Altman Star Par (with lens kits)
- 12 x Baby Color Q70
- 14 x Par 64 WFL

Cyc Lights

- 6 x Altman 2 cell sky cyc lights

- 8 x 10 foot lighting booms and bases

- 2 x Lycian 1266 follow spots
Located in the center of the 3rd catwalk

Audio

Power

110 volt wall outlets

Inputs/Outputs

24 microphone inputs onstage (1-4 DSR, 5-8 DSL, 9-16 USR, 17-24 USL)

House 16 channel 100 ft. snake in addition to onstage inputs allows use of all 32 console inputs.

4 onstage monitor outputs (1-3 available DSR & DSL, 1-4 available at USR & USL)

Control Location

Rear of house on HR (mix positions in open booth)

Paging System

Shure Paging System

Areas covered – dressing rooms, scene shop, light booth, green room.

Production Communications

Telex Wireless Communication System

2 channel, 8 headsets

Telex Wired Headsets

2 channels, 8 headsets

Commonly used input locations:

DSL, DSR (SM panel), audio booth, light booth, 1st and 2nd catwalks, follow spot booth

Other positions available

Audio Equipment Inventory

Mixing Console

Yamaha LS9-32

32 inputs (24 stage inputs), 16 Omni Outputs (4 amped stage sends/mixes)

(<http://www.yamahaproaudio.com/global/en/products/mixers/ls9/downloads.jsp>)

Fixed Speakers

4 x L'Acoustics Arcs Wide

Right and left speaker clusters, 2 per cluster

(<http://www.l-acoustics.com/products-arcs-wide-117.html>)

1 x JBL ASB6128

Subwoofer; flown over center of apron

(<http://www.jblpro.com/www/products/instal-led-sound/ac-series/asb6128#.W6AU785KiM8>)

2 x L'Acoustics SB18m

Subwoofer; 1 each mounted above right and left speaker clusters

(<http://www.l-acoustics.com/products-sb18m-subwoofer-118.html>)

5 x L'Acoustics 5xt

Front fills; mounted in front face of apron

(<http://www.l-acoustics.com/products-5xt-120.html>)

Audio Equipment Inventory Continued

Portable Speakers

5 x Yamaha SM12V Wedges

2 x Yamaha CM15V

2 x Yamaha S-12 Me

2 x Yamaha CW118V

(http://www.yamahaproaudio.com/global/en/products/speakers/clubv_series/index.jsp)

2 x JBL AM6215/95 wedges

(https://www.jblpro.com/ProductAttachments/AM6215_95.pdf)

Instrument Amplifier

Ampeg Bass Amp

PF 800 Head

PF-410HLF

PF-115LF

(pictures available upon request)

Microphone Inventory

Shure

11 x SM58

3 x Beta 58

6 x Beta 98H

4 x ULX Lapel Mic*

2 x SM57

4 x Beta 87

1 x PG-81

4 x Wireless SM58 ULXP*

*can only use up to 4 wireless mics at one time

Heil

(<http://www.heilsound.com/pro/>)

3 x PR-35

1 x PR-40

2 x PR-20 UT

4 x PR-30B

2 x PR-22

1 x PR-31BW

Drum Mic Kit

Includes: 3 x PR-28, 2 x PR-22, 2 x PR-30B, 1 x PR-48

Audio-Technica

6 x AT 871R Floor Boundary Mic

Crown

3 x PCC-160, 1 PZM-Audio Force

AKG

2 x C-1000-S

Playback

MacBook laptop (audio out, HDMI out)

Single CD playback (Tascam CD A500)

Carpentry

Seating Capacity

479

Measurements

- 1st Catwalk – 9'4" from plaster, 28'6" from deck (approx. 29' throw to plaster)
- 2nd Catwalk – 26'8" from plaster, 31'6" from deck (approx. 41' throw to plaster)
- 3rd Catwalk – 60'4" from plaster, 31'6" from deck (approx. 68' throw to plaster)
- Proscenium opening = 46'0" wide x 23'0" high x 3' deep
- Apron @ widest point = 16' edge to plaster, 14'8" edge of pit cover to plaster
- Apron @ narrowest point = 10'5" edge to plaster, 9' floor edge to plaster

Wing Space

- SR-12' from proscenium to tab curtains, 18' proscenium to locking rail;
- SL-16' from proscenium to tab curtains, 20'6" proscenium to wall.

Playing space between masking legs

- 19'5" left and right of center
- 38'10" total

Fly System

- Single purchase counterweight (26 sets)
- Batten width = 63'

Trim Heights

- All electrics are trimmed to 23'
- Grand Border (TEASER): trim 19'8"
- Border #2: trim 20'4"
- Border #3: trim 20'4"
- Border #4: trim 19'



Miscellaneous Equipment

Piano

Yamaha C6 Grand Piano

Haze/Fog Machines

1 x Amhaze Whisper Water-based Hazer
1 x Antari ICE 1000W Water-based Low Lying Fog Machine
4 x Antari Z1520 DMX LED Burst Fog Machine
2 x Martin Magnum 650 Fog Machine

Music Shell

Stage Right Alla Breve Music Shell
10 pieces

Platforms

20 platforms total
Leg heights: 8 @ 8", 4 @ 16", 4 @ 24", 4 @ 32"

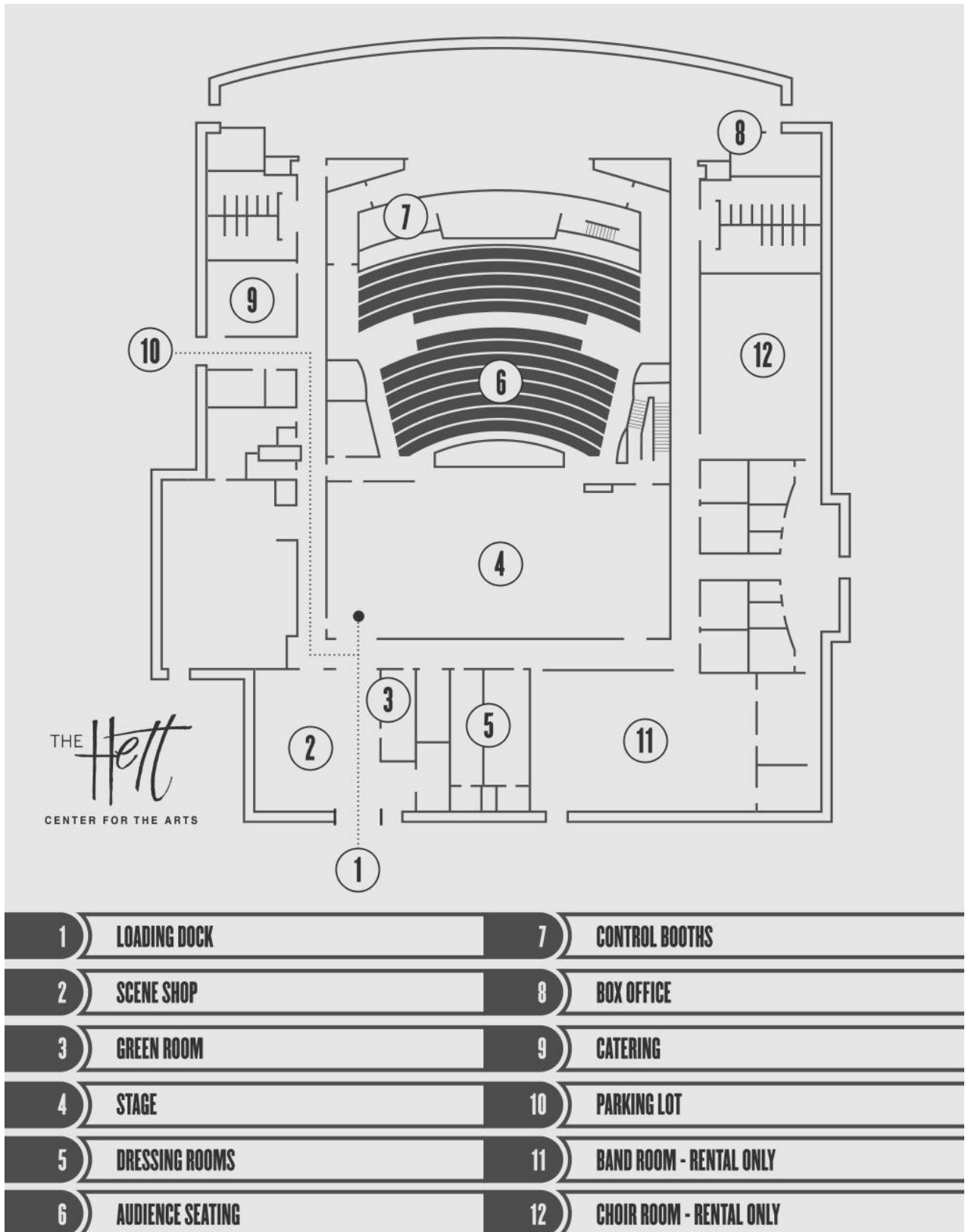
Marley Dance Floor

Black or grey
6 pieces total
5 pieces @ 50' L x 6'6½" W (approximate combined width = 32'8½", fits upstage of proscenium arch)
1 piece @ approximate 46' L x 6'6½" W (fits between proscenium arch)
Approximate total combined width = 39'3"

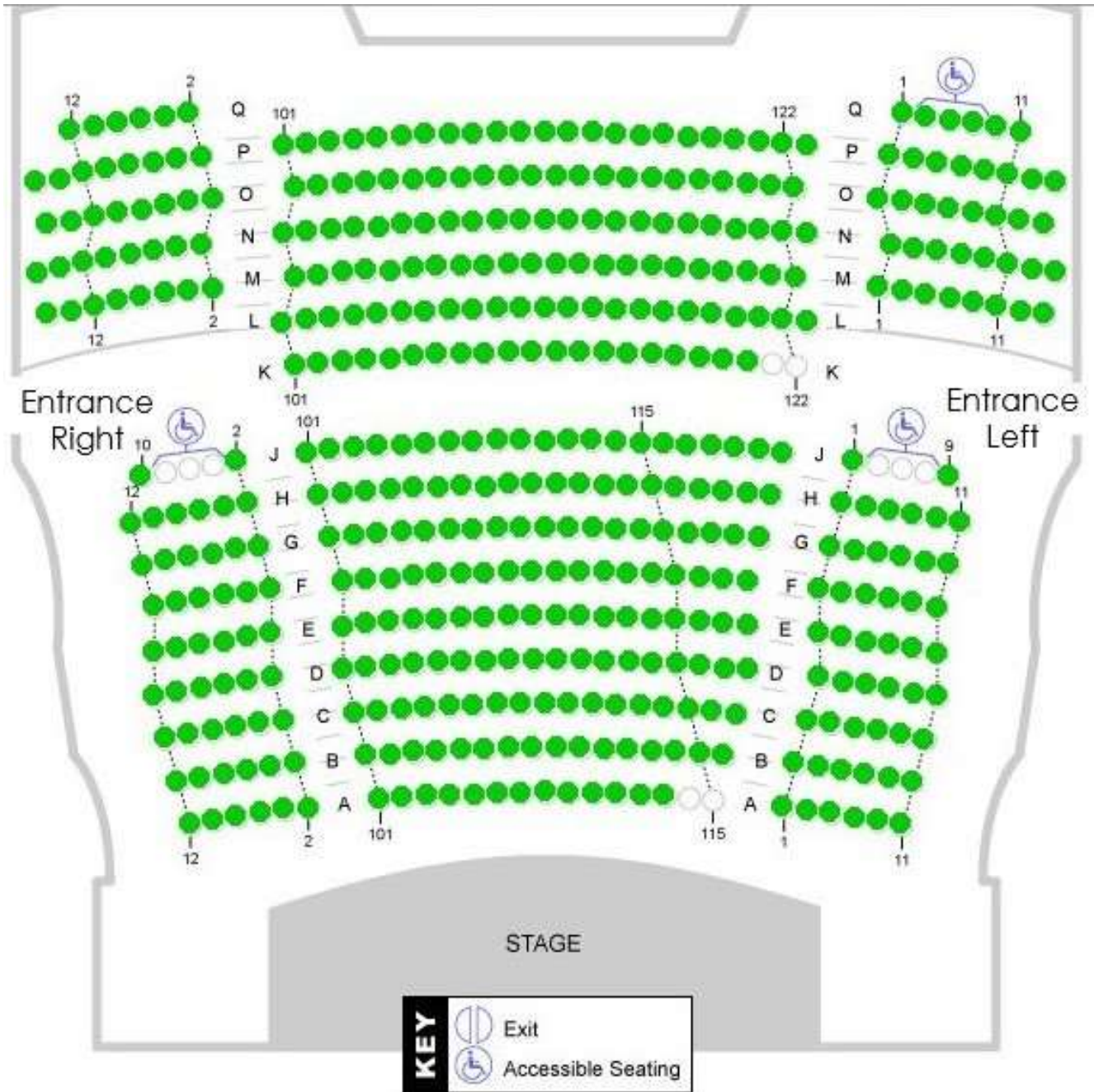
Lineset Schedule

Line Set #	Description	From Plaster	Dimensions
1	Grand Drape	8"	27'6" H X 57' W 25oz. Ink Blue Velour 50%
2	Grand Border	1'6"	10' H X 63' W 25oz Ink Blue Velour 50%
3	Electric #1	3'	63' wide double pipe, raceway stage pin
4	Sign/GP	4'11"	
5	Legs #1	5'6"	28'6" H X 12' Wide 25oz black velour flat
6	Movie Screen	6'10"	24' H X 20' W White
7	Border #2	9'7"	10' H X 63' W 25oz black velour flat
8	Electric #2	10'10"	3 x 6 circuit drop boxes
9	GP	12'3"	
10	GP	13'	
11	Legs #2	14'2"	28'6" H X 12' W 25oz black velour flat
12	Border #3	16'6"	10' H X 63' W 25oz. black velour flat
13	Electric #3	18'1"	3 x 6 circuit drop boxes
14	GP	19'7"	
15	GP	20'10"	
16	Traveler	21'7"	26' H X 63' W 25oz black velour 50%
17	Border #4	22'10"	10' H X 63' W 25oz black velour flat
18	Electric #4	25'6"	4 x Drop boxes = 18 circuits
19	GP	26'11"	
20	GP	28'3"	
21	Border #5	29'7"	10' H X 63' W 25oz black velour flat
22	Legs #4	30'4"	28'6"H x 12' W 25oz black velour flat
23	Black Scrim	31'9"	29'H X 63' W black sharkstooth scrim
24	Cyc Lights/Electric #5	33'6"	6 x Altman 2 cell sky cys
25	Blackout Curtain	35'6"	28'6"H X 48' W 25oz black velour flat
26	Cyclorama	36'6"	28'6"H X 63' W White RP cyclorama

Hett Floorplan

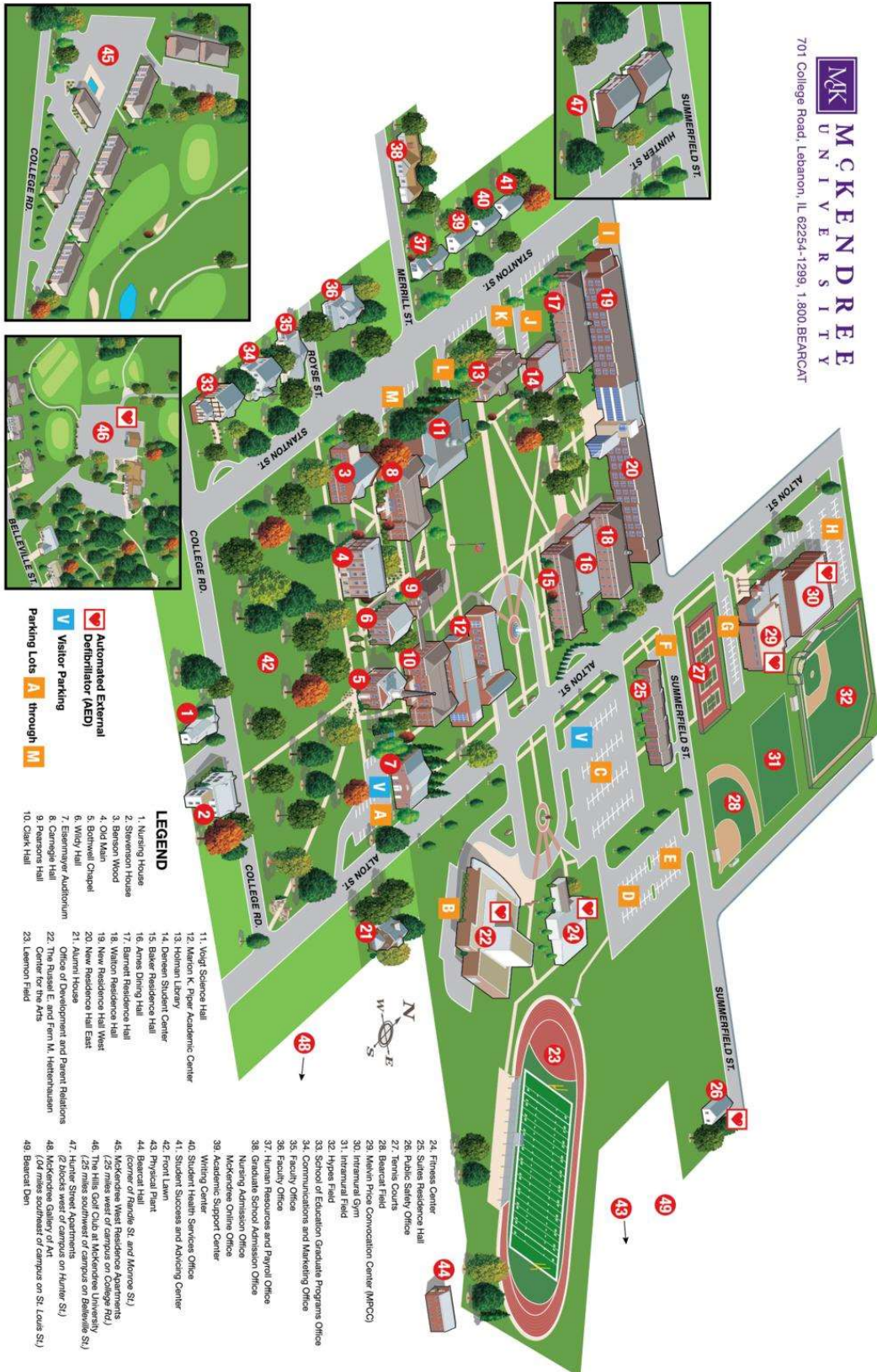


Hett Seating Chart



Campus Map

MCKENDREE UNIVERSITY
 701 College Road, Lebanon, IL 62254-1299, 1.800.BEARCAT



Equipment Photos

Lighting Company Switch

